

Steeple Aston *Life*

APRIL 2020

ISSUE No. 560

Inside SAL this month:

- How to help record our local wildlife
- Learn how to make a tasty rhubarb and custard cake
- Information and advice on Coronavirus
- And much more...

HARRIS'S STORES & POST OFFICE

Opening hours:

7.00am - 7.30pm (Mon-Fri)

7.30am - 7.30pm (Sat)

8.00am - 6.00pm (Sun)

PRODUCTS AVAILABLE

Fresh bread from Nash's Bakery.

Fresh meat and poultry.

Quality frozen fish and sea-food.

Organic free-range eggs.

Bread rolls and baguettes baked daily on the premises.

Cakes: a taste of home-made.

Off-licence with a wide range of beers, wines and spirits.

Fresh fruit and vegetables.

Top-up for mobiles, gas and electric.

Fax and photocopying services.

Dry cleaning agent.

National Lottery tickets and much more.

Thank you all for your continued support.

Please let us know of any ideas or suggestions you may have of ways in which we can extend our services to you.

Tel: 01869 340201

e-mail: raj4878@hotmail.com

Croxfords

CATERING FOR FOOD LOVERS



BANQUETS • MAGNIFICENT FEASTS • INTIMATE DINNERS
ANNIVERSARIES • BIRTHDAYS • WEDDINGS • FUNERALS

3 Soden Road, Upper Heyford, Bicester, Oxfordshire, OX25 5LR
01869 232616 • kitchen@croxfords.com • www.croxfords.com

John Dovey

FCCA

Chartered Certified Accountant
& Registered Auditor

- Limited companies, Partnerships & Sole traders
- Accounts prepared
- Self Assessment Tax Return completion
- Book-keeping services
- New business start-ups
- Personal & Corporate tax advice
- Company secretarial services
- VAT and payroll

email: jmd@johndovey.co.uk

telephone: 01869 233003

mobile: 07801 658328

ACCA



A small village based team providing

Gardening For All Seasons

Weeding - Pruning - Planting - Mulching - Pond care

For more information email: gfas@cangarden.co.uk Fully insured
RHS qualified
Freelance gardeners

Haines Watts

Local Matters, National Strength.

We are accountants who are innovative and progressive with wide and varied business experience gained over 80 years.

Our focus is on supporting the business community and individuals with excellent business advice and tax advice, as well as full assistance with accounting, auditing and VAT planning and pensions advice.

To find out how we can support you personally and/or your business, please contact us on 01865 378282 or email us at oxford@hwca.com



Click on the item below to go straight to its page. To return to Contents, click on the page number at the foot of any page.

April 2020: CONTENTS

APRIL FEATURES	PAGE
Crafternoon Tea	12
Emergency Plan	6
Recording Local Wildlife	9
VE Day	13

REGULAR FEATURES	PAGE
Child's Play	20
Child's Play Answers	41
Church Matters	31
Dr Radcliffe's Primary School	25
Gardening Spot	29
Have you ever been to...?	21
In the Kitchen	15
Mind Games	17
Mind Games Answers	41
Poetry Corner	19
SAVA	24
Steeplejack	22-23
Steeple People	8

REPORTS FROM CLUBS & SOCIETIES	PAGE
1 st Deddington Guides	39
Cricket Club	42
Golf Society	25
Football Club	28
Valentine Club	43
Walking Group	28
Women's Institute	39

INFORMATION	PAGE
Bus times	47
Calendar	48
Church Services	46
Noticeboard	4-5
Steeple Aston Directory	2
Village Hall News	20

NEW ADVERTS	PAGE
Plant Sale	14
LiberHouse Garden Buildings	12
The Windmill	41

Cover photo: Martin Lipson

Steeple Aston *Life*

COPY

All articles and letters to the Editors
editorsalife@gmail.com

COPY DEADLINES

The copy deadline for SAL has now changed to the 15th of each month.

The copy deadline for the May 2020 issue is therefore 15th April.

ADVERTS

All adverts, and all advertising queries (*availability, prices, dimensions, suitability of illustrations, etc.*) to **Charlotte Bartlett**
salife.advertising@gmail.com

01869 347347

ADVERTISING DEADLINES

Please note: there is a new deadline for adverts (black & white only), which should be submitted no later than the 15th of the month.

ADVERTISING RATES

Non-commercial adverts:
 1 page (village events only)- £15
 1/2 page - £12, 1/4 page- £6.
 Commercial adverts:
 1/2 page- £15, 1/4 page- £8

Steeple Aston Directory

Age UK		Richard Preston	340512
Allotments (Church)	Enquiries	Stuart Walton	347300
Angling Club		Antony Morley	tonyriver_83@hotmail.com
Archive (SAVA)	Chairman	Martin Lipson	347046
Badminton (Tuesday mornings)		Barbara Brewer	340423
Badminton (Thursday evenings)		Lydia Powell	347746
Beekeepers (Swarm collection, advice)		Anna Allen, Paul Honigmann	340160, 340665
Bell ringers		Graham & Dorothy Clifton	347273
Hand-bell ringers		Sally Cooper	347173
Brownies		Fiona McLoone	340132
Catholic Church - St Teresa's (Charlbury)		Father Tony Joyce	01608 642703
Cherwell District Council	Bodicote House		01295 227001
Choral Society	Chair	Ann Livings	233518
Church of England (St Peter & St Paul)	Rector	Rev Marcus Green	340903
	Church Wardens	Eileen Baglin-Jones	340099,C15
Methodist Church – Tackley		Rev Paul Carter	01865 243216
	Steward	Tim Bailey	01869 331516
Councillors - Cherwell District Council		Cllr Mike Kerford-Byrnes	07805 665393
		Cllr Bryn Williams	07836 271998
		Cllr Hugo Brown	
Cricket Club	Chairman	Peter Higgins	347493
Crimestoppers			0800 555111
Deddington Guides		Marian Trinder	340806, 07786001641
Deddington Health Centre	Appointments		338611
	Repeat Prescriptions	10am - 3pm	338847
	Out of Hours		111
Dr Radcliffe's C of E School	Headmistress	Frances Brown	340204
Football Club	Secretary	Peter Wild	07950 837773
Garden Club	Chairman	Richard Preston	340512
Golf Society	Chairman	Alan Brewer	340423
Horticultural Society	Show Secretary	Vicky Clifton	07817 025948
Meals on Wheels		Hanny Nicholson, Judith Lane	340823, 349052
Players	Secretary	Alan Wightman (07943 537909)	324875
Parish Council	Chairman / Clerk	Richard MacAndrew/ Cathy Fleet	347209, 347000
Police	24hr Call Centre	(non emergency)	101
Post Office & Harris Stores		Raj	340201
Pre-school			340863
Public House	Red Lion	Aidan & Kegan Madden	340225
Robinson's Close	Letting Agent	Katie Rushworth	340196
Scouts Group		Colin Cassford	243038
Sports & Recreation Centre	Letting Agent	Katie Rushworth	340196
Steeple Aston Walking Group		Anna Allen	340160
Toddler Group		Charlotte Clarke	07799 030490
Valentine Club		Richard & Daphne Preston	340512
Village Hall (see advertisement)	Letting Agent	Katie Rushworth	340196
Village Website	www.steepleaston.org.uk	Editor: Jenny Bell	347714
Volunteer Connect - Community transport scheme			0300 3030125
Women's Institute	President	Linda Needle	340028



“...folly is not always folly.”
Jane Austen

Steeple Aston *Life*

April 2020
Issue No. 560

Editors:

Becca Coker and Angela Smith
editorialife@gmail.com

Treasurer: Vaughan Billings
01869 340857

Secretary: Jenny Taylor
01869 340551

Advertising:
Charlotte Bartlett
01869 347347

salife.advertising@gmail.com

Deliveries:

Stuart & Penny Cummins
01869 349155
cummins2011@outlook.com

Layout design:

Edward Dowler, Martin Lipson

Committee:

Edwina Kinch, Hanny Nicholson,
Jenny Bell, Sue McLean

Editorial

This is my first edition as editor of Steeple Aston Life and I can't wait to get stuck in! To make life easier, my co-editor Becca Coker and I have decided to edit alternate months, starting with me. Since moving to Steeple Aston four years ago, I've been an avid reader of the magazine, and found it incredibly useful and entertaining. I hope I can keep up the high standards.

I'll start by thanking Heather, who did a wonderful job as editor before me, and has offered me a great deal of help and guidance as I've taken on this new role. Thanks also go out to the SAL committee for their support and assistance, which has been greatly appreciated.

As we adjust to our new roles, Becca and I would love to know what you think about Steeple Aston Life – what do you want to see more (or less) of? What are your favourite articles? Please drop us a line at editorialife@gmail.com. All feedback is welcome.

So my first edition has been somewhat of a rollercoaster. As Coronavirus grips the nation, there have sadly been a number of cancellations and amendments to events and society meetings, including the cancellation of the Spring Show. We all hope these will start up again soon. In the meantime if you have any worries or questions about Coronavirus, including where to find help if you think you have it, assistance with food deliveries, or are just looking for someone to chat to, we've got plenty of places to turn to inside.

For some light relief, turn to page 9 where Rachel Wade advises us on how to monitor our local wildlife, or have a giggle with Peter Wild's April Fool's themed poem on page 19. Plus, you can learn more about my co-editor Becca in Steeple People on page 8.

Wishing everyone all the best in these testing times.

Angela





CORONAVIRUS

MESSAGE FROM DEDDINGTON HEALTH CENTRE

If you are concerned that you might have Coronavirus, or have been in contact with someone who has it, please do not come to the surgery. Stay at home, avoid close contact with other people and use the NHS online Coronavirus service <https://111.nhs.uk/covid-19> to find out what to do next.

Age UK

Age UK Oxfordshire are providing advice & information for anyone worried about Coronavirus on their website here <https://www.ageuk.org.uk/oxfordshire/about-us/news/coronavirus/> and have set up a new, free telephone support service including a friendly, regular weekly call to see how people are and offer advice if needed. The number is **01865 411 288** - leave a message and an advisor will call you back ASAP. Please note this is not an emergency medical service; please ring 111 for medical advice and 999 in a medical emergency.

POSTPONED: the Annual Litterpick on April 5th has been postponed and will be held instead in September. Details to follow.

BUS SERVICES ALTERED DURING EMERGENCY

See page 47 for details

Road Closures

Heyford Road will be closed Monday 13th April – Friday 24th April for new drainage works.

The Rousham crossroads will be closed from 8pm on Monday 6th April until 6am on Tuesday 7th April for resurfacing.

NEW SAL email address for copy and articles

From now on, please send your articles and news to our new email address:
editorsalife@gmail.com



The Spring Flower Show

Many apologies to all of you who had grown or made something for the Spring show that should have been held on the 29th March. After much consultation, the committee decided to cancel the show for this year due to the coronavirus outbreak. Hopefully, this horrid disease disappears as soon as it arrived and our annual flower show on August Bank Holiday Monday will continue as usual. I have schedules for that show available so if you would like to get an advance copy, completely free, just give me a call. Keep safe and enjoy the garden.

Richard Preston
Chairman of Steeple and Middle Aston Horticultural Society

SPEED MONITOR RESULTS SO FAR ...

As you will have noticed, the Parish Council has been using the new Speed Indicator Device (SID) in several locations round the village. Here is the initial data taken from it:

Fir Lane near School 23rd Jan - 7th Feb: there were 2716 vehicles recorded; the 85 percentile speed was 29.1mph; 2% of vehicles were speeding - average speed 37.5mph.

South Side near Hill House 7th Feb - 7th March: there were 12,227 vehicles recorded; the 85 percentile speed was 28.7mph; 4% of vehicles were speeding - average speed 32.7mph.

Heyford Road near Orchard House 7th March - ongoing: 822 vehicles recorded so far; the 85 percentile speed was **32mph**; 16% of vehicles were speeding - average speed 33.2mph.

Potholes

Just a reminder that Steeple Aston has a FixMyStreet SuperUser. This means we have a fast track method of getting potholes filled as long as they meet the relevant criteria in terms of size, depth etc. If you report a pothole direct to the Parish Clerk (parishclerk.steepleaston@gmail.com or 01869 347000), she will pass on the details to our SuperUser, who can contact the Highways contractors, without going through FixMyStreet. The system has been in place for a while now and works well.

STEEPLE ASTON COMMUNITY EMERGENCY PLAN

We all know that we have Emergency Services who deal with most types of emergency, but a major incident may occur in our village when they could not reach us quickly (such as deep snow or a major incident elsewhere).

This means the Community needs an up to date plan to provide effective, immediate support to those involved in an emergency, including any who have been injured or displaced, as well as to support the Emergency Services when they do arrive.

As part of the Parish Council's Emergency Plan we need to keep an up to date list of expertise and resources within the village.

Please let the Parish Council know if you have any of the following skills:-

Paramedic / Doctor
Nurse, Retired Nurse / Midwife
Trained First Aider
Pharmacist/ Chemist
Radio Amateur
Electrician
Computer technician
Builder
Engineer
Vet
Farmer

Or if you have any of the following resources:-

Generator
Radios, walkie talkies
4 x 4 vehicle
Tractor and trailer
Van
Lifting Equipment
Minibus
Gas stoves / catering equipment
Chainsaw
Surface water pump
Wet Vac
Old-fashioned plug in telephone

PLEASE CONTACT: Cathy Fleet on parishclerk.steepleaston@gmail.com or 01869 347000 if you have any of these skills, resources or anything else you think would be useful in an emergency.

CORONAVIRUS - VILLAGE SUPPORT

Parish Council information

In March we posted notices round the village, on the website, and on Facebook, asking people to get in touch if they needed help, or if they knew of people who needed help. We have had some response to this; and we have identified other people in the village who are vulnerable and need assistance either with shopping or meals. We realise that there may be more people who we don't know about; and there will certainly be more who need help in the coming weeks as people go into self-isolation.

We also have a list of people who have generously offered their services as volunteers to help in whatever way they can. We are sure we will need more volunteers as more people start to require help.

If you are able to **volunteer** in any way at all, please get in touch with:

Cathy Fleet, parish clerk, at:

parishclerk.steepleaston@gmail.com

or on 01869 347000 or 0798 939 8838.

If you need help with shopping or picking up medication, or you know someone who does, please get in touch with Richard MacAndrew at richardmacandrew.steepleaston@gmail.com or on 01869 347209.

If you know someone in an 'at risk' group, who would benefit from the new Red Lion delivery service (details on page 27, and updates on the village website), please get in touch with Charlotte Bartlett at charlottebartlett.steepleaston@gmail.com or on 01869 347347.

Tell us if you need help! Tell us if you can help!



Becca Coker

SAL co-editor



How long have you lived in Steeple Aston?

We'll have been here for 2 years in July.

Where did you move from?

London via a brief stint back in Barford St Michael
- and on the M1 visiting Tom (my husband) in North Yorkshire.

What do you like best about living in Steeple Aston?

The sense of community and the fact that lots of people have lived here for a long time but newcomers are welcomed with open arms. It's also brilliant to have the school, church, pub and shop - and access to lots of lovely walks.

Is there anything you don't like about living here?

I could cope with there being fewer potholes.

Give a potted history of yourself – in 40 words or less.

Grew up in Barford St Michael and spent a decade at university in Durham and Cambridge before six years working as a lobbyist in the City. Escaped London, met Tom, bought a house, got married and had a baby!

Early bird or night owl? Cat or dog? Optimist or pessimist? Technology: friend or foe? To marmite or not?

Early bird; dogs (but also our two lovely cats); optimist; technology can be fantastic but I'm very grateful to have grown up in a world before social media; to Marmite - but sparingly!

What was the best thing about being a child?

The sense of magic.

What is the best thing about being an adult?

Broadly not having to do what other people tell you to do.

What do you do for a living now?

I'm a major gifts fundraiser for Keble College, Oxford.

What's your secret/guilty pleasure?

I'm slightly addicted to house buying programmes and fly-on-the-wall documentaries.

What's your favourite piece of music?

I have broad tastes from James Taylor to John Rutter - and apparently wanted the latter played on loop for six hours during my labour (apologies, Tom).

What would you save from your house if it was on fire?

Along with Tom, our daughter Imogen and the cats, my late dad's wedding ring.

What's your favourite saying or piece of advice?

From Measure for Measure - 'Our doubts are traitors, and make us lose the good we oft might win, by fearing to attempt.'

What do you get grumpy/mad about?

Bad service drives me nuts; also, people dropping litter.

Become a citizen scientist and help record your local wildlife



Spring is in the air; the snowdrops, daffodils and crocuses are brightening up the lanes, gardens and wild spaces in the village and wildlife is starting to reappear after the long, wet winter. The first bumblebees to emerge are busily filling up on nectar, the birds are nest building and I'm waking up to the dawn chorus. This week I'm waiting for my first butterfly of the year to flit over the garden fence and wondering if this will be the year that the cuckoo will return from Africa to the fields behind our house?

As well as enjoying all the sights and sounds of spring why not contribute to the conservation of our native wildlife by submitting your sightings to one of the many (and growing) biological recording schemes? Many wildlife charities and local groups are keen to know where, when and how many of a particular animal or plant you've seen. You don't have to be an expert on any particular group of animals or plants - most of the schemes are set up with clear identification guides - but if you want to learn more about a particular group there are lots of online guides and forums that will help you to identify your sightings. Here is just a snapshot of some of the schemes that need your help:

Help the **Woodland Trust** understand how wildlife is affected by weather and climate change by submitting sightings to Nature's Calendar: <https://naturescalendar.woodlandtrust.org.uk>

Butterfly Conservation have a range of monitoring schemes and identification training, from recording one-off butterfly sightings to taking on a local transect:

<https://butterfly-conservation.org/butterflies/recording-and-monitoring>

The **British Trust for Ornithology's** website lists twelve projects that you can contribute to, from monitoring the birds in your garden to taking on a local 1km square to survey <https://www.bto.org/how-you-can-help/take-part-project>. Each project clearly lists the time and skills needed, from beginner to expert.

A quick way to record wildlife is to download the **iRecord App** to your smartphone. It's available, along with some other great recording apps, here: <https://www.ceh.ac.uk/citizen-science-apps>. The app allows you to select the species you want to record from a selection of photos and upload your location using GPS.

Have you seen a dead badger on the road? Or know of a local sett? The **Oxfordshire Badger Group** would love you to share sightings at <https://www.oxonbadgergroup.org.uk/report/sightings-setts/>.

Likewise, add your hedgehog reports, live and dead, to **The Big Hedgehog Map** (<https://bighedgehogmap.org>). We've lost half of Britain's hedgehogs from the countryside since 2000 so your data will be valuable to help understand the reasons for their decline.

Happy monitoring and please get in touch if you'd like further information!
Rachel Wade, Middle Aston

VICTORIA PRENTIS MP

MEMBER OF PARLIAMENT FOR NORTH OXFORDSHIRE

Meet Victoria:

Victoria holds regular surgeries for constituents in supermarkets and her office, and visits pubs across North Oxfordshire as part of her Pub Tour. Please check the website or call Victoria's office for more information about upcoming dates.



Victoria Online:

 @victoriaprentis
 @victoria_prentis
 /victoriaprentis
www.victoriaprentis.com

WORKING HARD FOR NORTH OXFORDSHIRE ALL YEAR ROUND

Contact Victoria:

Constituency:

 01869 233685
 Orchard House
Hopcraft Lane
Deddington
OX15 0TD

Westminster:

 020 7219 8756
 House of Commons
London
SW1A 0AA

victoria.prentis.mp@parliament.uk



HOME DELIVERY

We're not in the business of trying to sell thousands of homes; we just do all we can to sell yours.

To discuss your property, simply give us a call:

01869 343 600
cridlands.co.uk



RS SERVICES

Aerial, Satellite & TV installation and repair

Qualified engineer with 40 years experience

Call Shane for a free quote on

01865 881313 OR 01865 882300

Mobile 07815095704

North Aston Organics

ORGANIC CERTIFICATION UKS

LICENCE NO 78954



We grow delicious organic vegetables and deliver them, freshly picked, to a collection point in this area



To try one of our vegetable boxes, or to find out more,

Please contact us at

NORTH ASTON ORGANICS

The Bakery Office, North Aston, OX25 5HX

Telephone: 01869 347702 Email: northastonorganics@gmail.com

www.northastonorganics.co.uk



JOHN WHITWORTH TREE SURGERY



BODICOTE COTTAGE

16 HIGH STREET

BODICOTE

OXFORDSHIRE

OX15 4BS

Tel/Fax: 01295 268170

Mobile: 07970 154552

The Arty Crafty Place

Home of BlockCraft, our Indian Block Printing Range

Come and visit our studio in Middle Aston where we are running a variety of fabulous arty workshops. Learn the art of Indian block printing, lampshade making, pottery and loads more.

Our studio is also available for private workshops, birthday and hen parties, W.I. and art groups.

Open weekdays 10am - 4pm, visitors welcome. Workshops run on weekdays, weekends and evenings.

Visit Us

9 Hatch End Old Poultry Farm, Fir Lane, Middle Aston, OX25 5QL

Call us on: 01869 349020

www.theartycraftyplace.co.uk

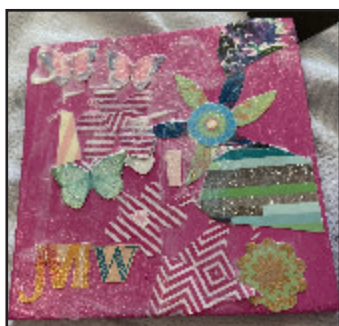


March's Crafternoon Tea & Pop Up Café – the first of many!

We had a great time at the first Sustainable Steeple Crafternoon Tea on Sunday 8th March. Held in conjunction with the new monthly Pop Up Café, run by the Village Hall Committee, there was crafting and cake galore! I'm not sure whether it was the lure of Daphne's cakes or the chance to get creative with our collaging and decoupage frames but had plenty of visitors across the afternoon and Christopher's book stall added a further level of interest. Several of us had brought our own projects, but much of the fun was provided by our younger crafters (and visiting Texan) who wonderfully embellished old picture frames (previously destined for the tip) with decoupage and turned old wood off-cuts into pieces of collage art. As you'll see from the pictures, we had some budding artists in our midst. Those who didn't craft enjoyed great conversation and even better cake!

We were intending to meet again on 5th April and then 3rd May, however we have taken the difficult decision not to go ahead with either Crafternoon Tea or the Pop Up Café on these dates, due to the ongoing Coronavirus situation. However, we will be back in the summer! In the meantime, watch this space for an imminent Sustainable Steeple announcement regarding the first project we'll be funding with the near £2000 that we have raised to date. Thanks again to everyone who has donated items for up-cycling so far!

For more information, please contact Amanda Rodgers on 07793 553150 or amanda@sustainablesteeple.com.



LiberHouse Garden Buildings

New for 2020. Our Studio Multi

With an internal floor area of 20 sq m (215 sq ft) our Studio Multi offers a range of possibilities

This can be a space for a home workshop with plenty of room for workbenches and machines.

Alternatively, with the addition of a WC and kitchenette area, it could be a home office or studio space.

Adding a shower room and a kitchen makes a possible granny flat or guest room which can also be used for holiday/Airbnb lets.

All our garden buildings carry a 10 year guarantee.

High quality Garden Buildings built to your specific requirements

Made in Oxfordshire



"Thank you for the excellent service through organising the planning approval, the delivery and the assembly. First rate and a nice change to deal with a company that really understands what the customer wants and then supplies it."

Happy to recommend you to friends and if someone would like to come and have a look at the finished job we would be delighted to show it off."

★★★★★

Call now to discuss your requirements
01869 349825

design@liberhouse.co.uk www.liberhouse.co.uk

VE Day 75 Update

It is with a very heavy heart that I am writing a revised article to the one I had written on our VE Day 75 weekend plans, which was full of exciting news.

Since that time, after much discussion with all of those helping with the organisation of the event, we have had to take the difficult decision that, in light of the current Coronavirus situation, we are not able to go ahead with the planned events. This means that both the Street Party on Friday 8th and 'We'll Meet Again' sing-a-long on Saturday 9th will not take place.

The health & safety of our community has to be our primary concern and organising an event which actively seeks to bring the community together, seems completely at odds with this.

Whilst we appreciate that, at the time of writing this (Sunday 15th March), the Government have not yet put in place active restrictions around social mobility, we know that these are coming and that by 8th/9th May it is highly likely that, at the very least, restrictions around the social mobility of our over 70s population will have been put in place, as well as those around 'mass gatherings'.

We appreciate that this news is disappointing and we have been looking at options for other dates, but until we know more, it is difficult to judge when would be a good time and, in any case, the date of the anniversary will have passed.

All this said, there are things we can still do to recognise and commemorate this important date:

- **Bedeck your house and/or garden with bunting, union jacks and anything else fitting you can lay your hands on!** – not only a great way to commemorate the 75th Anniversary, but a brilliant way to brighten things up during challenging times and bring us all a bit of cheer!
- **Join in with the Nation's Toast** – whether in the privacy of your own home, or on your doorstep as a distanced, but collective act of remembrance. At 3pm on Friday 8th May, charge your glasses and make the following toast:
"To those who gave so much. We thank You".

Perhaps later in the year, when things have settled down, we can have some form of alternative celebration!

Thanks for your understanding.

Amanda Rodgers





GREAT ANNUAL
Plant Sale

**PAYNES HILL HOUSE, STEEPLE ASTON,
OX25 4SQ**

SATURDAY 16 MAY 2019

10.00am – 1.00pm

Healthy refreshments

-

Carefully selected and home-grown
perennials, annuals and a few shrubs,
including: Dahlias, Lilies, Sweetpeas and other
annual climbers, Cosmos, Alliums, Digitalis,
Zinnias, Cornflowers, Sunflowers
Heritage tomatoes, Squash and other
specialist vegetables,

And More!

-

In aid of Mary's Meals and
Steeple Aston Church

-

Park near the church



In and Out of the Kitchen

I have joined Slimming World and done reasonably well, losing 10% of my body weight since the beginning of September – slowly, but not so very hard. Those of you who have read my contributions before will recall that I have aimed to slim into my wedding dress. I failed, and doubt if I will ever succeed. However, I have other dresses which I'm aiming at, so this seems to be the way to go. Don't hold your breath!

One of the many difficulties of dieting for me is that I spend quite a lot of time thinking about the things I would like to eat but shouldn't. Rice pudding has become a recent obsession, but have resisted so far. Now that it is rhubarb season, the temptation grows. It would be fine if it didn't require so much sweetening. A real delight for me is ginger in syrup. It would do a great job instead of the sugar in the roasting. I have to admit to not having tried this recipe. I found it whilst sifting through a bit of food porn – there are no calories in reading. If I ever get into one of those dresses, I'll make this to celebrate!

Rhubarb and Custard Cake

Ingredients

1 quantity of Barney's roasted rhubarb (as below)
250g butter – room temperature with more for greasing
150g pot of ready-made custard. Ambrosia is good
250g self-raising flour
½ teaspoon baking powder
4 eggs
250g caster sugar
1tsp vanilla essence

Barney's Roasted Rhubarb:

Heat oven to 200C/fan 180C/gas 6. Rinse 400g rhubarb and shake off excess water. Trim the ends, then cut into little-finger-size pieces. Put in a shallow dish or a baking tray, tip over 50g caster sugar, (or used some chopped ginger in syrup) toss together, then shuffle rhubarb so it's in a single layer. Cover with foil, then roast for 15 mins. Remove foil. Give everything a little shake, roast for 5 mins more or until tender and the juices are syrupy.

And for the Cake

1. Make the roasted rhubarb first, carefully draining off the juices before you let it cool. Butter and line a 23cm loose-bottomed or springform cake tin. Heat oven to 180C/fan 160C/gas 4.
2. Reserve 3 tbsp of the custard in a bowl. Beat the rest of the custard together with the butter, flour, baking powder, eggs, vanilla and sugar until creamy and smooth. Spoon one-third of the mix into the tin, add some of the rhubarb, then dot with one-third more cake mix and spread it out as well as you can. Top with some more rhubarb, then spoon over the remaining cake mix, leaving it in rough mounds and dips rather than being too neat about it. Scatter the rest of the rhubarb over the batter, then dot the remaining custard over. Bake for 40 mins until risen and golden, then cover with foil and bake for 15-20 mins more. It's ready when a skewer inserted into the middle comes out clean. Cool in the tin, then dredge with icing sugar when cool.

Caroline Edwards

Race Night

Saturday 25th April 2020

at and in aid of the

Sports and Recreation Centre



Doors open 6:30pm, Starter's Orders 7:30pm

£2 entry for Lucky Number Race Card
and Light Supper.

Prizes for Winning Owners and Jockeys
Tea betting available

For Further Information
Call Neil Brewer on 01869 349747
or Alan Peckham on 01869 347756

???? Mind Games

1. Complete the sentence by replacing each set of dashes with a word. The same six letters must be used for both words.

What are the words?

The group returned from their _____ and walked mud all over the polished _____ floor.

2. A hiking group are on a five-day expedition. On the first day they cover one quarter of the total distance. The next day they cover one quarter of what is left. The following day they cover two fifths of the remainder and on the fourth day half of the remaining distance.

The group now have 14 miles left, how many miles have they walked?

3. Two holiday show presenters are reporting on a number of locations. Diana visits India, France, Spain, Nigeria and Denmark. Peter visits Australia, Luxemburg, Antigua and New Zealand.

Is his final assignment in Italy or Portugal?

4. A woman walked south for 2 miles, then west for 4 miles, then north for 3 miles, then east for 3 miles, then south for 1 mile.

In which direction and for how far should she walk to return to her starting point?

5. A car and a coach set off from the same point at the same time to travel the same 70-mile journey.

If the car travels at 55 mph and the coach travels at 35 mph, how many minutes will there be between their arrival times?

6. A travel agent had taken eight times as many bookings for Beach Holidays Abroad as for Camping Holidays. There were 29 more bookings for Cruises than for Camping Holidays and 9 less for UK City Breaks than for Cruises. 26 bookings were taken for UK City Breaks.

How many bookings were there for the other three holiday types?

JLDA

Design, Planning Applications, Listed Building Consents & Building Regulations Applications

A complete service for all your building needs, including New Builds, all types of Extensions as well as Loft and Garage Conversions

"JLDA has done 3 designs for us. The first one has transformed our lives. It was a ground floor extension and involved redesigning our kitchen as well. The work was of the highest quality and the level of service excellent. We were very much involved in the process of design but the bureaucratic requirements such as Design, Planning permission were expertly handled by JLDA."



Call now to discuss the project you have in mind

01869 349825
design@jlda.co.uk
www.jlda.co.uk



Group Yoga Sessions

MONDAYS

19:30-21:30

The Marlborough School, Woodstock, OX20 1LP
Book at www.marlborough.oxon.sch.uk

TUESDAYS

9:30-10:30 (Drop-in)

Upper Heyford Reading Room, OX25 5LB

THURSDAYS

9:30-11:00

The Marlborough School, Woodstock, OX20 1LP
Book at www.marlborough.oxon.sch.uk

19:30-21:00 (Drop-in)

Upper Heyford Village Hall, OX25 5LB

FRIDAYS

9:30-10:30 (Drop-in)

KGF Community and Sports Centre,
Lower Heyford, OX25 5PG

The Canal Studio

37 Freehold Street, Lower Heyford, Oxfordshire OX25 5NS
Klara Walters-James, T: +44 7799493510
klara@thecanalstudio.co.uk, www.thecanalstudio.co.uk

Dragon Framing

The Studio, Earls Lane
Deddington

Bespoke Frames & Mirrors
Ready Made Frames

Open Monday – Friday 10am – 4pm
Other times by appointment

01869 337597

On Line Shop

Think Chiropractic is just for back pain?



At Active Family Chiropractic, our focus is on movement & quality of life!

We pay special attention to your spine & pelvis because this houses your spinal cord & nervous system.

Keeping this part of your body working helps keeps the body moving, removes pressure on nerves & improves flexibility - keeping you **healthy, active & happy!**



ACTIVE FAMILY
—CHIROPRACTIC—

Ashcroft Therapy Centre,
Deddington,
OX15 0SW
01869 722053



Member of
British
Chiropractic
Association

GCC registered
General Chiropractic Council
www.gcc-uk.org

www.activefamilychiropractic.co.uk



April Fool.....Whoopee!

I've just been taken in it's true to say,
A prankster caught me somewhat unawares,
He asked me to sit down and take a rest,
Whilst pointing out some really comfy chairs.

My feet did ache so I was glad to sit,
His kindness filled me up and made my day,
I didn't spot the smirk that filled his face
As I sat down he'd turned the other way.

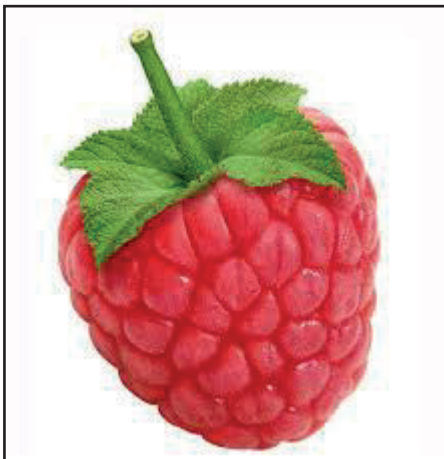
My lowered cheeks descended to the seat,
My smile went down as upwards went my heart,
For from the chair an echo did resound,
A thunderous Raspberry (not those in a tart).

As I looked round the room had gone amok,
My 'friend' was kneeling beating floor with fists,
His tears were rivers, face screwed up with glee,
I picked him up quite firmly by the wrists.

I'm not amused I ranted as he laughed,
Your childish prank has jolted my belief,
And all those people gathered round the room,
Think I sat down to give myself relief.

My harsh rebuke did naught to quell his joy,
But there's no need for me to shed a tear,
I'll bide my time and make a cunning plan,
And get the rascal back this time next year.

Peter Wild



Shutting the Stable Door

Over the past decade or so,
Following travel to foreign parts
We British have thawed out a little,
And taken foreign ways to our hearts.

In times gone by, we drank tea with our meals,
Wine bottles ne'er graced the table.
But cheap package holidays changed our habits,
Now we knock back as much as we're able.

Garlic, chorizo, halloumi, and Brie,
There was no 'foreign muck' in our diet.
But thanks to travelling TV chefs,
Now we're all willing to try it.

The firm British handshake started to change.
To foreign-style hugs and kissing.
Corona virus has put a stop to that
And continental kissing is missing.

Brexiters bemoan our foreign ways
And want to make us pure British.
But it's too late to shut the stable door now
The horses are out...and skittish!

Cathy Lawday

Child's Play



Easter Word Search



u	a	m	d	f	f	d	d	o	i	y	s	d	a	l
l	g	e	t	i	r	o	r	a	b	b	i	t	f	o
h	g	g	b	b	u	d	e	a	n	c	g	g	s	
d	r	b	a	g	n	k	r	s	a	s	h	c	y	g
a	t	c	e	o	s	g	l	i	s	g	o	k	a	h
f	t	r	b	k	m	k	n	f	u	w	c	h	d	f
f	b	o	n	n	e	t	a	f	n	s	o	s	i	f
o	s	s	o	n	c	b	b	l	d	g	l	d	l	h
d	b	s	n	n	e	h	o	a	a	g	a	p	o	s
i	e	a	s	t	e	r	y	u	y	b	t	a	h	l
l	s	s	l	n	o	c	n	c	h	y	e	h	m	a
a	e	n	s	p	r	i	n	g	h	b	b	u	s	m
s	t	n	b	s	l	a	u	t	e	l	e	n	g	b
r	e	i	b	s	l	h	b	a	s	k	e	t	f	f
b	c	h	i	c	k	c	r	a	m	h	s	r	n	g

Easter	Bunny
Eggs	Chick
Basket	Chocolate
Bonnet	Cross
Spring	Sunday
Hunt	Rabbit
Lamb	Holiday
Daffodil	

Answers on p.41

Village Hall News



Monday 4th May AGM Village hall committee room 8pm.

The Annual General Meeting of the Steeple Aston Management committee will still go ahead but most likely conducted by teleconferencing (details still to be decided). Any members of the public wishing to participate / attend please contact Barbara on 01869 340423 for further details.

Friday 8th May/Saturday 9th May VE Day Anniversary Celebrations

Due to Coronavirus these two events will not now be taking place.

Sunday 7th June – NGS Open Gardens, Steeple Aston 2 – 6pm Teas in Village Hall

The Village Hall Committee are once again organising refreshments for the Open Gardens. The money raised goes towards the Macmillan Nurses and other cancer charities. If anyone would like to bake or supply a cake, or help serve teas in the afternoon (for approximately one hour, for a time to suit you) please contact Barbara on 01869 340423.

Please note our letting agent is Mrs. Katie Rushworth

01869 340196. Email steeple-aston-village-hall@hotmail.com

Collect keys from "Touchstones" The Dickredge, Steeple Aston. OX25 4RS.

Barbara Brewer, Chair

HAVE YOU EVER BEEN TO.....?

The Roald Dahl Museum and Story Centre

Perhaps in the light of everything that is going on in the world because of Coronavirus, this may be a visit you'll have to store up for a while, but it is certainly somewhere to look forward to visiting, especially if you have children to entertain.

Situated in Great Missenden in a listed building on the High Street, the Roald Dahl Museum and Story Centre is without doubt the most child-centred museum I've ever visited. Having said that, Roald Dahl (who was an original and unusual character) wrote for adults as well as children and there is much of interest for adults too.

From the moment of arrival, when you receive your Gloriums Museum Guide and your My Story Ideas booklet, visitors enter the world of Roald Dahl's stories and characters. There are dozens of interactive 'things to discover and do' to make sure that visitors have a 'truly phizz-whizzing' (amazing) time. Much of the pleasure for me was watching and listening to visiting children excited to find and recognise characters from the books they had read. Dahl's Writing Hut, which was at the bottom of the garden, is reproduced complete with his treasures table and visitors can sit in his writing chair (perhaps seeking inspiration). His treasures included his hipbone, a carved grasshopper sent to him by a long jumper and a ball made from silver paper wrapping from his daily bar of chocolate. Sweets and especially chocolate were very important to Roald Dahl – as they are to children!

Throughout the various galleries, set pleasantly around a central courtyard, youngsters are encouraged to be creative themselves. Perhaps a visit to this museum is more likely to develop imaginations than watching the telly-telly bunkum box (as Roald Dahl called the TV). Everything in the galleries and around the museum was brightly coloured and positive, encouraging children to develop ideas and be creative. Tickets entitle you to visit throughout the year following the day of your visit when you might also enjoy pursuing either the Countryside Trail or the Village Trail; cheerful green and blue leaflets are available to guide you. There's a café and a shop. The Museum is signposted from the car park in the village centre a few hundred yards away. I hope you'll enjoy your visit as much as my 6-year-old great nephew, his mother and I did, agreeing that we had enjoyed a phizz-whizzing time!

Adult tickets: £7.00; Child tickets: £4.70; Concessions: £4.70

Eileen Baglin-Jones



Parish Council Meeting Notes



The Parish Council meeting in March was a rather sombre affair. Someone had decided that the usual location of the Village Hall's Committee Room was not large enough for us to be two metres apart so we were widely spaced along a long table in the Sports and Recreation Centre instead. Not always hearing each other properly was the downside of not infecting each other.

There was some good news though. Planning approval has been given for the Rectory Homes development opposite The Red Lion. This means that a dangerous piece of road will be made safer for all of us. The village's Speed Indicator Device is being moved around by parish councillors and until recently it was near the Red Lion car park, opposite to the proposed new development. I intended to try to see if the sign was working by driving towards it at over 30mph. But I found it impossible as it was too dangerous to approach that corner at anything like 30mph. To my astonishment the device recorded one vehicle as doing 45 mph (at night) so roll on the development and its related road improvement as soon as possible. The Councillors agreed Paines Hill is one of the worst roads for speeding and they are still proposing to put the device there. Apparently concrete is getting in the way of a base for the sign being fitted there.

Another good bit of news also relates to the Rectory homes development. Two of the houses have been designated as for shared ownership, ie from 25% owned and the rest rented. The Councillors are checking but it looks as if these can be allocated to people with strong village connections rather than to the top family on Cherwell's housing list.

The next cheering issue is that Steeple Aston was described at the Planning Committee by Barry Wood, Cherwell Council Leader, as "a place that has championed rural exception sites and affordable homes, and is a classic and leading example that others should follow".

Martin Lipson should have been presented with his High Sherriff's award by the time this issue of SAL goes out but sadly the ceremony has had to be abandoned and he will get the certificate by post. The award is for 'people in Oxfordshire who have made outstanding contributions to the communities in which they live and work' and that describes Martin's work on the Mid Cherwell Neighbourhood Plan admirably. Well done Martin and thank you on behalf of us all.

We were told that Cherwell had plans to plant three million trees by 2045, which is just over 400 a day. Apparently it is possible to plant at this rate though there were doubts about how many would be looked after subsequently.

It looks as if a lot of regular village activities are being cancelled. Church services are being videoed and the Spring Show and the VE Day celebrations have been cancelled. The Litter Pick on 5 April has been postponed to September. The Councillors are looking at how they can help the vulnerable in the village, for example by delivering groceries from the shop. They will keep a constant eye on what may need to be done as the virus situation gets worse.

We have a 'Fix my Street' superuser in the village which means that we have someone here who can get potholes filled quickly. What happens is that he paints white lines round the potholes that meet the Highways Department's criteria and they get filled within the next few days. He drives round the village regularly but if you think there is a pothole he has missed (must be at least 40mm deep) please can you tell Cathy Fleet, the Parish Clerk on 01869347000 or email to parishclerk.steepleaston@gmail.com

There was a long discussion of dog poo. I thought the Pre-School response was the most fun. On their website there is a poem which ends:

*You want a dog, you get the muck
So be the adult and pick it up.*

Continued on next page

Parish Council Meeting Notes



But the poem is a bit misleading as almost all dog walkers are picking up their dog's poo and, according to the Dog Warden who inspected the village, the vast majority of poo is from wild animals such as foxes. One Councillor explained that it was easy to distinguish dog and fox poo if you got down and smelled it. An impressive devotion to duty! The Councillors discussed what could be done. I thought the best suggestion was that we could all get a free dog poo bag from the shop and if out for a walk we could clear up whatever mess we saw. Someone suggested there should be a free poo bag with each copy of SAL. In addition the Councillors thought children could be harnessed to the cause by asking them to design notices about poo. It is a pity that foxes, which are the main culprits, cannot read.

The Councillors had received a letter saying the Play Area needed a bit of TLC. This is the time of year when it always looks at its worst because the new bark for the Spring has not yet been delivered. The weather has been a problem as, for example, the mosaic had been cleaned of mud but almost immediately there had been another downpour and it was covered in mud again. The Councillors are intending to get the MUGA power-washed and are co-ordinating a working party to do some clearing up in and around the Play Area.

The Councillors discussed putting broadband into the Village Hall. When there is a new development the village gets some money for community projects. The Councillors wondered whether a bit of the Rectory Homes development money could be used for this purpose. This would mean there would be broadband by the defibrillator. Someone asked how difficult it is to use the defibrillator and it was brought into the hall and we were shown. The machine talks to you, very clearly and precisely, about what you have to do and it isn't frightening at all. I would now be brave enough to use it if I had to do so. Truly you cannot get it wrong.

The Councillors wanted to know if the loo near the Play Area had soap and paper. Apparently the soap has gone missing. We were told about a loo in Germany where the paper is dispensed a sheet at a time and you are allowed four sheets before the door opens. Sounds like an effective system.

The recent closure of the bridge by Lower Heyford station seems to have been unplanned and the result was that the school bus was very late the first day. It is hoped that when the Beeches is closed from 13 to 24 April all buses will be able to go via Hopcrofts and not take too much longer than usual.

One of the Councillors wrote to his phone supplier, O2, saying his mobile reception was poor. They said it was fine, but after pushing they agreed to visit and had to admit that he was right. O2 have said they will tweak the three local masts to see if they can cure the problem that way. It would be very helpful if you could let Cathy Fleet know if you see an improvement in your mobile reception (01869347000 or email to parishclerk.steepleaston@gmail.com). If this does not work O2 say they will consider introducing powerful boosters as well.

The next Parish Council meeting is due on 20 April but it is too soon to know if it will go ahead or be open to the public.

Steeplejack

This report is the personal view of the SAL reporter, and is not intended to be a complete record of the Council meeting. The official record - once approved - will be available at www.steepleaston.org.uk



INTERESTED IN THE HISTORY OF YOUR VILLAGE?

At the time of going to press, a decision about postponement has not been taken. SAVA will be in touch with all those wishing to join the walk once a decision has been made.

Steeple Aston Village Archive (SAVA) has organised A GUIDED WALK around the heart of Steeple Aston on Sunday, May 3rd 2020 from 2.00pm to 4.00pm

Knowledgeable members of SAVA will lead two groups of 15 people round the village, starting from the Village History Centre (next to the Village Hall) - one will go clockwise, and the other anticlockwise.

Tea and cake will accompany an informal questions session at the end.

“New” residents are particularly welcome.

The event is free of charge, but donations are allowed!

However, places are limited, so **early booking is essential.**

Please contact us through our website:
www.steepleastonarchive.org.uk/contact-us

Or telephone 01869 347046

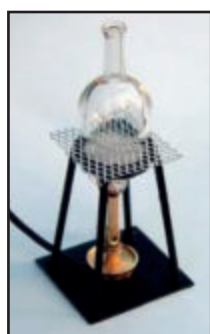
School News



Feet First Friday

Our first Feet First Friday was a great success! So many parents commented on how quiet the roads were and how lovely it was to walk to school and have a conversation about the day ahead and to listen to the birds! Thank you to everyone who rose to the challenge and joined in. Please consider making this part of your weekly routine and encourage children to earn points for their class.

Science Day for Year 5



Year 5 had the most amazing time at Kingham School last Friday. Thank you so much to Anna Thatcher who organized for us to attend this event. There were hands-on experiments, some gorier than others, and a delicious lunch! Thank you to the parents who came at the end of the day to see what the children had been up to. Everyone thoroughly enjoyed the day. Please see the school website for some photographs of the different activities.

Niki Ridgway

Steeple Aston Golf Society



Please make a note in your diary if you would like to join us, and our newly elected captain, Martin Kay, on any of our days out. Come for a round of golf along with some silly chat whilst enjoying a good meal afterwards.

Friday 1st May	The Wychwood G.C.
Friday 12th June	The Springs G.C.
Friday 3rd July	Wrag Barn G.C.
Friday 7th August	The Cotswold Club.
Sunday 13th Sept	The Cotswold Club.
Friday 2nd October	Stratford on Avon G.C.

We have retained most of our favourites from last year. However, Burford have now priced themselves out of the market so we have decided to try The Springs in Wallingford again. We will be playing the course a week after it hosts the Trilby Tour, so we can expect it to be in very good condition.

If you would like to know more then please contact me on 01869 340423 or our secretary Chris Cooper 01869 347173.

Happy golfing

Alan Brewer, Chair

TAILORED TO YOUR INDIVIDUAL REQUIREMENTS



CUPBOARD LOVE

beautiful fitted furniture

For a cabinet you can depend on

wardrobes ◦ cupboards ◦ tv units
 shelving units ◦ bedrooms ◦ utility rooms
 home offices ◦ bathrooms ◦ kitchens
 libraries ◦ studies

Small local workshop ◦ Free quotations

Call **Martin Pedel** on **07738 828740** to discuss design ideas & possibilities





www.martinpedel.co.uk

NOAH'S ARK

Painting Company

SIMPLY BEAUTIFUL DECORATION

All forms of interior and exterior painting and decorating, specialising in murals.

T: 01295 811026
 E: pete@noahsarkpainting.co.uk
 W: noahsarkpainting.co.uk

Pebsham Cottage, Aynho Road, Adderbury
 Oxfordshire, OX17 3NL

[COMPUTERPRO]

Local, Professional IT Support & Computer Services

-  One-off Repairs & Troubleshooting
Wireless & Networking Solutions
-  Disaster/Failure & Data Recovery
Data Security & Loss Prevention
-  Virus & Malware Removal & Protection
System Monitoring & Management
-  Hardware Maintenance & Upgrades
Software Installation & Configuration
-  Intelligent Website Development
(Design, Building, SEO & Analytics)

Delivering expert, friendly & reliable IT Support & Services to North Oxon's small businesses & homes for over 15 years.

Fast response and flexible call outs. Remote desktop support.

Please call the team: 01869 352002
 pcstuff@computer-pro.co.uk
 www.computer-pro.co.uk

Bed & Breakfast

A large comfortable studio room
 en-suite shower, own entrance

Old Toms

Northside
 Steeple Aston
 OX25 4SE

Tel: 01869 340212

e-mail: oldhatchedtom@gmail.com
 Web: www.oldtoms.co.uk



CHILTERN
CONSULTANCY
INDEPENDENT FINANCIAL ADVISERS

**Based in Steeple Aston and Stokenchurch,
offering a comprehensive, independent financial planning service
for all your Investment, Pension and Protection needs.
Specialising in ethical and environmental sustainable funds and
investments to help you work towards a better future for all.**

Joanna Coull DipFA , Lifestyle Financial Planner
T 01494 451441 M 07850 346959 E joanna@chilternwib.com

www.chilternconsultancy ltd.com



**The Red Lion
South Side
Steeple Aston
01869 340225**

CORONAVIRUS UPDATE

During this unprecedented time, we are intending to offer a takeaway and delivery service to all those in the village for as long as we can.

For those who cannot, or have been advised not to go out, we hope that a regular three meals a week delivery service will be available. Contact Charlotte Bartlett on 01869 347347 to sign up for this.

For all those who are just fed up with the current situation we are offering our normal pizzas and meals to takeaway. Call the pub for menus and details on 01869 340225.



Football *Focus*

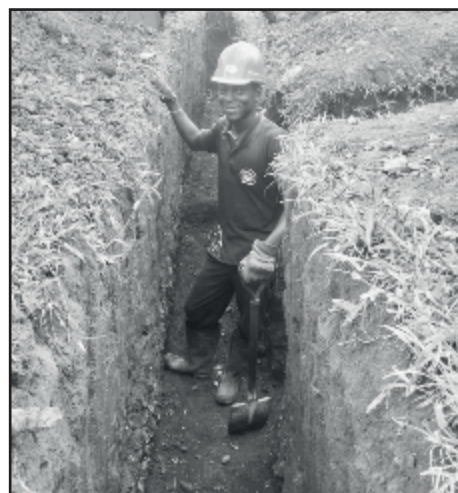
Update from Ghana

Further to our last article, we have just had some news from Ghana about the project that we are sponsoring by donating kit. "Trade not Aid."

It is planned that our kit will be used to encourage the football loving community of Abenta to help build an extra classroom on the side of the Junior High School. The "Trade not Aid" project is asking the strongest lads to dig the foundations in exchange for the kit. The project is due to be finished for the new school year Sept 2020. The ground has been rock hard, so the digging will start when the rainy seasons starts in March.

Steeple Aston FC wish the community of Abenta every success in their designated project, and hope that the kit feels like a just reward. It is rewarding for us to think that our kit will be worn on another continent, and that it has also contributed to furthering education.

Peter Wild, Secretary SAFC



Steeple Aston *Walking Group*



The hardy walkers did not let a bit of rain put them off for the monthly walk. The walk was originally at Deddington but due to several fields of just mud, it was transferred to Blenheim Palace Grounds. A 5-mile walk around the park was enjoyable, especially as it only started to rain towards the end. A visit to the Star Inn finished the walk properly.

Vaughan Billings



The Gardening Spot

Why do we garden?

This might seem like a strange question coming from someone who supposedly encourages you to enjoy the garden and hopefully, garden just that little bit better. I was talking to someone recently and we touched on the subjects of Coronavirus and rewilding. Yes, both subjects at the same time. Whilst writing this article in mid-March the virus appears to be approaching Steeple Aston along with the rest of the country and the discussion leant towards the food chain and supply. Then the word rewilding popped up. Now I was relieved to listen to someone else who had the same thoughts as myself on both these subjects. If the virus continues to spread and food imports from other infected countries are reduced or stopped completely, we will need to be able to produce as many crops in this country as possible. Rewilding, we both agreed, was admirable in the appropriate areas of this country where consumable crops just will not grow, and there are lots of suitable sites across The British Isles, but not use good agricultural land where farmers can grow crops for the residents of the UK. Maybe you don't agree; maybe it is just the two of us who think this way.

So, why do we garden I ask? Following on from the previous paragraph, we can produce food, safe food for ourselves in our garden or on an allotment. It also gets you outside in the fresh air where you can get some good old-fashioned exercise with a constructive result at the end. It helps with "mindfulness" (sorry but I couldn't resist some reference) where you can let the troubles of day-to-day living disappear at no financial cost to yourself. Most of all, it gives great satisfaction to look over your own work and enjoy the flowers that you have cultivated or harvest those tasty vegetables that bear no comparison to the tasteless supermarket variants.

Well April has arrived and hopefully some spring-like weather where the sun shines and the ground is not waterlogged. April is, in my opinion, the best and busiest time of the year for a gardener. It is time to sow many of the vegetable seeds that will feed you and the family when the supermarket shelves diminish. It is the time when the flower borders start to spring into life, and you can plant out crops such as tomatoes and cucumbers in the greenhouse towards the end of the month. If you like a show of bedding plants, then think about buying some small plants from the local garden centre and bring them on in the greenhouse. Don't plant them outside until the end of May as the cold winds and a possible late frost will damage them and possibly kill them. Now is the time to prune the hydrangeas although I must confess, I have just pruned mine in mid-March. Feed shrubs and fruit trees with something like Growmore or my favourite, fish, blood and bone meal. Some perennials will need staking, and this is the best time to do that. Always be careful when planting out new plants or those which you have propagated in the greenhouse. Harden them off in a cold-frame or something similar to reduce the impact of moving from a comparative warm and sheltered position to the elements that the British weather can throw at them. Finally, this is a great time to feed your lawn with a high Nitrogen feed and cut the grass at a slightly higher level than you will later in the summer. Some products in the garden centres will not only feed your lawn but also reduce the weed growth and moss that has infiltrated your lawn over winter.

If you don't enjoy gardening or haven't got a garden, then how about visiting some gardens such as those opened under the National Garden Scheme (NGS)? In my opinion these are the best gardens to visit as they are "real gardens", managed by real gardeners. You might also like to visit such places as Waterperry or Waddesdon or simply look over the garden walls and fences in the village and admire other people's work. Whatever you decide to do, enjoy life and keep safe.

Richard Preston



PAUL KAY HAIR SALON

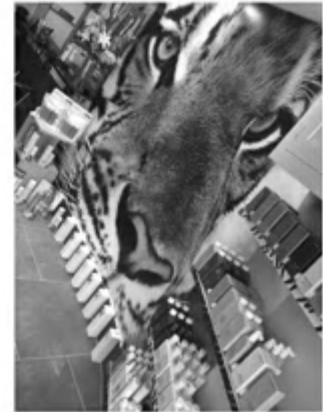
**The very best in
modern hairdressing**

online bookings available at
paulkayhairsalon.co.uk



**Highlights, tints, ladies cuts,
gents cuts, kids cuts, wedding
hair and many more services !!**

**Phone 01993 810810 for
your appointment !**



**Different levels of artistic
stylists with different prices to
suit all budgets.**

**41a Oxford street,
Woodstock, OX20 1TJ**

**email enquiries :
paulkayhairsalon@btconnect.com**



AT THE RED LION INN DEDDINGTON
Plant based food from the Poggs & Bom menu
100% plant based Pub

Light Weekday lunches, Sunday Lunch & Evening Meals.
Lunchtime reservations available. Open Tuesday to Sunday

www.poggsandbom.co.uk

Follow us on Instagram.....[poggsandbom](https://www.instagram.com/poggsandbom)
Market Place, Deddington Tel 01869 338777

Church *Matters*



Christ is Risen! From all at Steeple Church, I would like to wish everyone in the village a very happy Easter. Of course, the truth is that following the December general election, January's Brexit, our persistently wet and stormy winter, and the onset of this COVID-19 pandemic, Easter 2020 isn't now promising to be the happiest of times. Is there anything we can do to make things better?

On a global scale, it's hard to see how we can say 'yes' - but perhaps we have to leave big answers for others to worry about. Church is about loving God and loving people, however, and maybe there are some things we can do locally that will help us here and now. Faced with any situation where the news seems scary and uncertain, all of us have a tendency to think of ourselves - to wonder if we will be alright - but one of the surest tests of our humanity is to stop and see if we are thinking about others too.

Easter is a time when Jesus' nail-pierced hands are pulled wide apart and fixed to a plank of wood. But the truth is his arms are always wide open and ready to welcome you, me, all of us with his never-ending love. It's not nails that keep his embrace so wide - it's love.

A time when we all face something we have no control over can be truly awful. Some people will get sick. Some people may have to face the very worst news. For the rest of us, we are given a chance to put ourselves to one side. We are given a chance to rise up a bit and become our better selves. To care a little more: not to fear, but to choose to do good.

Good hygiene and washing hands is just the beginning. Then maybe we pick up the phone and check on someone we haven't seen for a day or two - are they self-isolating or under the weather? Can we help get them anything? Can we offer to loan a book or help them find something online that will make life feel a bit less empty? Can we drop off food or even just send a text regularly?

Fear, isolation, death are things that rob us of ourselves, of community, of the will to live. When Jesus died on Good Friday, his family of followers fell apart. And then he rose again. And the people who had fallen apart rose with him and became unstoppable. This Easter time perhaps all of us here need to see that story and find in it a picture of how we as a community know that all sorts of things face us all the time - and yet God gives us strength, if we will take it, to live and to love and to offer to each other life and love so that when we are weak then we are strongest.

The archbishops have now called on all Church of England parishes to pause public worship for a season during the COVID-19 infection, and so for the time being we will not be holding Sunday Church services, and we have postponed all our Lent activities.

However, the church building will be open daily for private prayer or reflection or for folk to come and find a little space with God. I will be posting a short video resource, 'Worship at Home', every Sunday on the homepage of our church website www.sntchurch.com. This is available for anybody who would like 15 minutes to pray, listen, seek God and feel connected to the community of faith in this place. In addition, I am sending out regular emails to everyone on our benefice email list. These have offers of help, a little news of others, and some encouragement, hope and love along the way. If anyone who isn't currently on that list would like to be - please let me know at steeplerector@hotmail.co.uk and I will gladly add you in. I am also (of course) available on the usual phone number, 340903.

Most of all, the church is here to care because we believe that God cares. The Church of England, as Archbishop Justin has said this week, is the church for England. None of us really know how to respond to these days; except we all promise to try and help each other, and to receive the help given to us when we need it.

Revd Marcus Green



kptreecare

All types of tree work carried out including stump removal & hedge cutting.

Contact us today for a free quote
NPTC Qualified & fully insured.

kptreecare.co.uk
 kptreecare@outlook.com
 07788 289344
 01993 891526

Official members of
Checkatrade.com
 Where reputation matters



Gas Heating & Service Ltd

Plumbing | Heating | Gas

We specialise in:

- Boiler Breakdown and repair
- Boiler service and Landlord Gas Safety
- Boiler change and upgrade
- Heating alterations and underfloor heating
- Hot water solutions and cylinder installation

All plumbing work undertaken

For a free and friendly quote contact:

Joe McEaney

Mobile: **07808 608 970**

Email: ghsoxford@gmail.com

Gas Safe No 532113



532113



ALISTAIR REDHOUSE ESTATE AGENTS

65 High Street, Kidlington Oxfordshire OX5 2DN

www.aredhouse.co.uk

01865 364541

Phone lines open 8am to 8pm
Monday-Saturday and until 5pm
Sunday. 01865 364541

Members of GPEA with a
network of approximately 800
independent offices.

Genuine family run agency
that supports you.

Free Sales, Lettings,
Land & Development Advice.

Bespoke Service by
agents who care.

Call in for a chat
and a coffee -
we will be very
pleased to
help you.

BENGAL SPICE

Restaurant & Take-Away

New Street (High Street on A4260), Deddington
Fully Licensed & Air-conditioned

Open 7 days a week (including Bank Holidays)

Opening: Mon - Sat: 12pm - 2:30pm & 5:30pm - 11:00pm
Sundays & Bank Holidays: 12pm - 2:30pm & 5:30pm - 10:00pm

Tel: 01869 337733 / 01869 337799

www.bengalspice-restaurant.com



Eldon Friends

For all your Social Care requirements

Eldon Friends are an independent service, who specialise in providing support* to enable you to remain living independently in your own home.

Whether you require transport to your appointments, assistance with your shopping trips, light housework or just simply companionship, Eldon Friends has the right package for you.

Contact us today for a no obligation discussion of your individual requirements.

Elaine Kelly: Tel: (01869) 340449

Email: info@eldonfriends.co.uk

Feel free to visit our website at: www.eldonfriends.co.uk

Covering The Astons and surrounding villages.

Qualified in Health and Social Care. Fully Insured.

***Eldon Friends is a provider of non-regulated services**



Iron and Wood Ltd

the wood burning stove centre



Visit our showroom at

Beaumont Road, Banbury,

Oxfordshire OX16 1RH

(opposite Jewson)

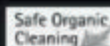
T: 01295 253936

E: info@ironandwood.co.uk

www.ironandwood.co.uk



Safe organic cleaning of carpets, curtains, upholstery and leather



- Carpet, upholstery and leather cleaning
- Curtains and mattresses deep cleaned
- Oriental rug cleaning
- Guardsman stain protection plans
- Dust mite control
- Expert spot and stain removal
- All work fully insured and guaranteed
- Allergy treatments now available - ask about Allergy-Out



Safeclean only use organic products

Our Services:



Kill Bacteria



Remove Dust Mites



Remove Odour

Call Russ Vernon for your FREE no obligation quotation:

Freephone: 0808 143 1308

Mobile: 07825 918946





Quality Interior & Exterior Painting & Decorating

Mathew Davies

30 Nizewell Head,
Steeple Aston,
Oxfordshire, OX25 4SJ

Tel:
01869 340017
Mobile:
07877 829576
Email:
mathew.davies3@btinternet.com

Creative Piano Lessons

I'm a piano teacher and composer with many years' experience of offering piano lessons focussing on developing musicianship, creativity and most of all enjoyment!

Whilst I do coach for exams (Grades 1–8 and GCSE and A Level performance), in an increasingly high-pressured exam-orientated culture I'm also pleased to offer an environment for creativity to blossom.

Whether you're contemplating piano lessons for your child or yourself, feel free to get in touch.

Rosemary

Rosemary.Jefford@gmail.com
Tel: 07542 086 038



Crafternoon Tea will be back in the Summer

Given the current Coronavirus situation, we will not be going ahead with our April 5th and May 3rd Crafternoon Tea & Pop-Up Café, but we'll be back in the summer with more exciting new-from-old projects – and more importantly, cake!

In the meantime, we will shortly be announcing our first project funded by the proceeds of our 'Second Chances' up-cycling project – watch this space!

Please also continue to think of us if you are having a clear out and are thinking of throwing things away! We've made nearly £2000 so far from the up-cycling of items donated to us – not to mention the fact that we saved those items from ending up being destroyed!

Thank you for your continuing support!

Please email amanda@sustainablesteeple.com or call on 07793 553150 for more information

www.sustainablesteeple.com

Polka Dots

Hair Design

The Holcombe Studio • High Street • Deddington • OX15 0SL
 Telephone: 01869 226522 • Email: Polkadotsuk@ymail.com

HORSE & GROOM, CAULCOTT

Unspoilt 17th century thatched coaching inn, specialising in high quality seasonal food, which is inspired by the best of French and English cuisine.

Four real ales offered from the best breweries in the country.



Booking recommended.

Opening times:
 Tues-Sat 12-3pm, 6-11pm
 Sun 12-3pm, 7-10.30pm

www.horseandgroomcaulcott.co.uk

Lower Heyford Road,
 Caulcott, OX25 4ND
 01869 343257

BACK PAIN, SPORTS INJURY & HEADACHE CLINIC

Especially for long term pain



Hector Wells B.Sc.(Hons), D.O., G.OsC.,
Registered Osteopath and Associates

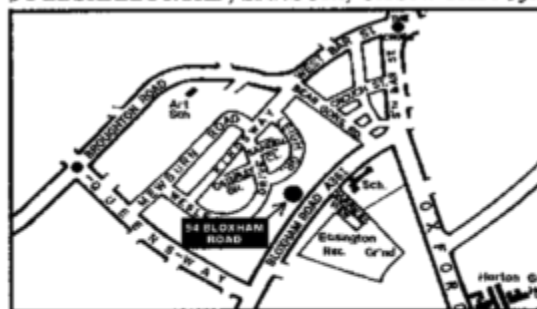
- Back and neck pains, Sciatica, Frozen shoulder,
- Tennis elbow, Knees and Arthritic Hips a speciality,
- Pins and needles, **Babycolic Clinic**
- **Recurrent Headaches, Migraine**
 - Whiplash, Neck pain
 - Shoulder pain, Stress pain

To avoid disrobing please wear a loose T-shirt and joggers/leggings

Appointments (01295) 265267
Monday to Saturday & Evenings
BUPA + PPP REGISTERED



54 BLOXHAM ROAD, BANBURY, OXON. OX16 9JR



FOOTWORX CLINIC

for your feet & leg problems

01295 271255

D. Houlton BSc.(Hons) Pod.SRCh.MChS. State Registered Podiatrist

Shaun Guard TV & WIFI SERVICES

- **Aerials** - supplied, repaired & poor reception solved
- **Satellite** - Sky Q dish upgrades, discreet dish installation also foreign TV
- **Internet** - blackspots cured, data cables to your TVs / computer
- **TVs** - hung on your wall or set up & tuned

 OXFORD AERIALS
www.oxfordaerials.co.uk

Call Bicester
01869 879111

D L HANCOCK LTD

Funeral Directors & Monumental Masons
Established 22 years and still independent

BICESTER'S ONLY INDEPENDENT FAMILY FUNERAL DIRECTOR

A caring traditional 24 hour service
provided by Mr. Hancock and his team personally

Serving Bicester and all Surrounding Areas

Private Chapel Of Rest

Jaguar Fleet of Funeral Cars

Perfect Choice
Funeral Plans



Member of
The National Association
of Funeral Directors



D L HANCOCK LTD

Tel: 01869 244200 (24 Hrs)
Chapel House, 13 North Street,
Bicester, OX26 6NA.

FISH & CHIPS



Wednesday: Steeple Aston 4pm to 9pm

Village Hall Car Park

Friday: Middle Barton 4pm to 9pm

Sports and Social Club



SONIT ELECTRICAL SERVICES

Snowdrop Paddock Mill Lane Upper Heyford Bicester Oxon

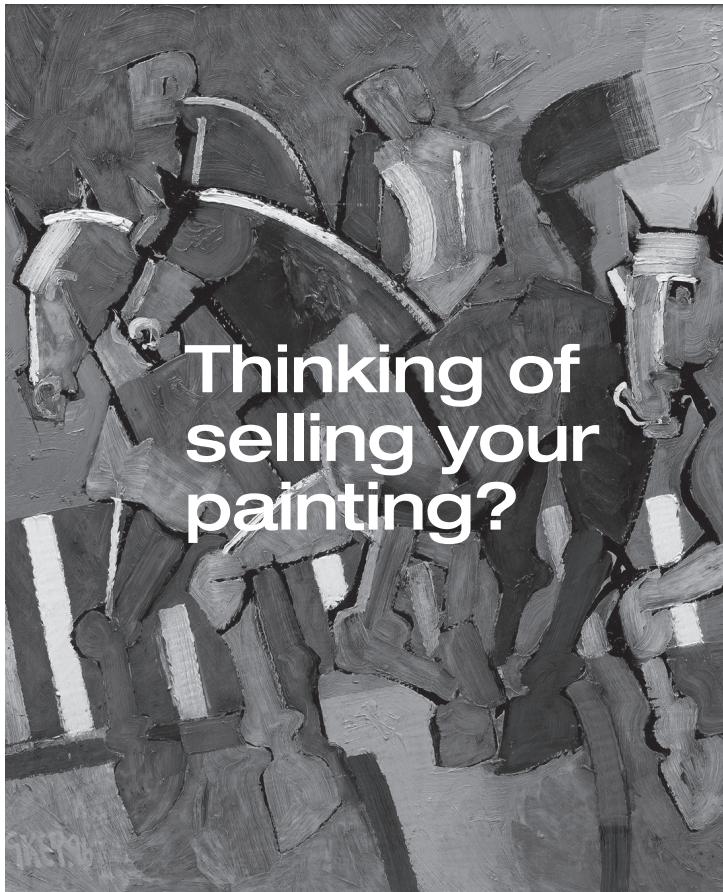
**INDUSTRIAL COMMERCIAL DOMESTIC
OVER 30 YEARS EXPERIENCE**

New Installations Outdoor Security Lighting
Full/Part Rewires Maintenance and Repairs

ALL WORK CARRIED OUT TO IEE REGULATIONS BS7671

All work guaranteed
Free quotation with no obligation

Tel : 01869 232272 Mob: 07802 544509 Mob: 07742 601516



**Thinking of
selling your
painting?**

Mallams
1788

Design & Modern Art Specialist Max Fisher, is available to give free confidential valuations on any piece(s) you are considering selling at auction.

Home Visits also available

Enquiries: 01865 241 358
or max.fisher@mallams.co.uk
www.mallams.co.uk

This month, our President warmly welcomed those present to our 102nd Birthday Night. After a short session of business, Merrill Bayley was asked to unveil the plaque to commemorate 100 years of Steeple Aston WI since its formation in March 1918; this can now be seen in the Village Hall foyer.

A superb ploughman supper of different breads, cheeses, pate, homemade chutneys and salads, accompanied by soft drinks, was then enjoyed. Following this, we had the traditional singing of Happy Birthday and birthday cake with Margaret Mead obligingly blowing out the candles.

After supper we had a wonderful talk entitled 'Alpacas and the World of Fluff' where we learnt about the different kinds of alpacas and their different fleeces. These fleeces are extremely soft and do not contain lanolin like sheep. After her talk, Jane Abbott, our speaker, gave us a short demonstration of wet fleecing and needle fleecing - two very different methods. She also brought along some of the items she makes from the fleeces and we all fell in love with the sheep and the owl.

Janice Kinory thanked Jane for a wonderful talk. Hopefully we can arrange a workshop with Jane in the very near future which we will open to members and non-members - do watch this space. As our tables for the evening held a pot plant these were then raffled off to six lucky winners.

Our next meeting is our AGM and the speaker for the evening is Gillian White with her talk 'Robert Dudley, Queen Elizabeth and the Kenilworth Entertainment of 1575'. New members are always welcome; if you need more information do not hesitate to contact Linda Needle – President on 01869 340028.

Linda Needle, President

Deddington Guides Report

It's been a month of celebrations - Pancakes for Shrove Tuesday (with a huge array of toppings) as well as our annual Thinking Day celebrations! This is when we remember the lives of Lord and Lady Baden Powell and think about our sister Guides and Girl Scouts all around the world. We met together as a district all helping to prepare something for a shared feast – food from many different countries.

In our own meeting food was involved again! We enjoyed food specialities from all over Europe. We have also celebrated 2 Young Leaders, Izzy and Vicki, making their promise, a new adult leader Charlotte plus four new Guides: Hannah, Flossy, Matilda and Rowan. A warm welcome to all!

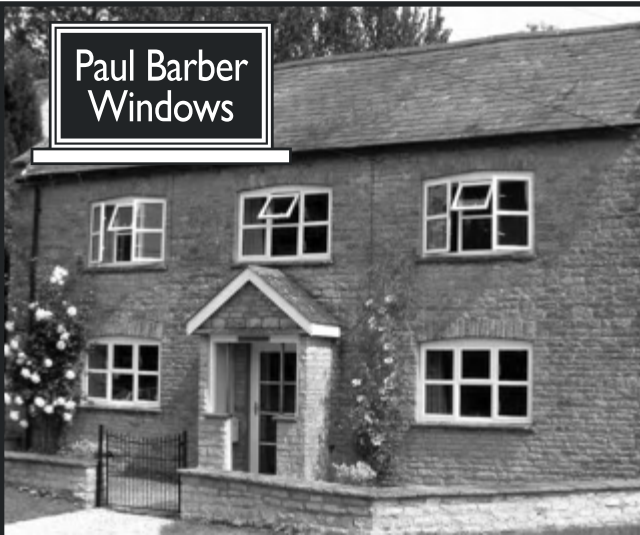
Tuesdays 7 to 9pm, Windmill Centre, Deddington **BUT all activities are cancelled until further notice.**

Maggie Rampley – 07957 600755

Marian Trinder – 01869 340806 or mariantrinder@gmail.com

Tilly Neal – 07557 095681 – tillyneal1@hotmail.com

Paul Barber
Windows



T: 07836 623407

E: paul@paulbarberwindows.co.uk

www.paulbarberwindows.co.uk

OVER 30 YEARS
EXPERIENCE



WINDOWS ■ SECONDARY GLAZING
RESIDENTIAL DOORS ■ FOLDING DOORS

lawrence furnishings
RE-UPHOLSTERY CURTAINS

FAMILY BUSINESS
TRADING SINCE 1978

WORKSHOP WITH SMALL
TEAM OF FULLY QUALIFIED
PROFESSIONAL CRAFTSMEN

FREE HOME VISITS WITH
DETAILED QUOTATIONS

COMPLIMENTARY
INTERIOR DESIGN

SHOWROOM WITH
INSPIRING FABRICS



01280 704 437

8d Boundary Road Brackley NN13 7ES
www.lawrencefurnishings.co.uk • info@lawrencefurnishings.co.uk

GMS DÉCOR



4TH GENERATION DECORATORS

INTERIOR / EXTERIOR / WALLPAPERING
TILING SPECIAL EFFECTS

HAND PAINTED KITCHENS & FURNITURE

FULLY INSURED - FREE ESTIMATES

TEL: 01869 340024 / MOB: 07988111784

EMAIL: GMSDECOR@YAHOO.CO.UK

WWW.GMSDECOR.COM



Market 9am - 12.30pm

Saturday 25th April

Saturday 23rd May

Over 50 stalls offering the very best fresh local produce
beer, bread, crafts, eggs, fish, flowers, fruit, meat,
preserves, patisserie, ready-made meals including
foreign cuisines, vegetables and much, much more...

For more information
www.deddingtonfarmersmarket.co.uk
or call 01869 337 940

Child's Play Answers

Easter Word Search

u a m d f f d d o i y s d a l
 l g e t i r o r a b b i t f o
 h g g g b b u d e a n c g g s
 d r b a g n k r s a s h c y g
 a t c e o s g l i s g o k a h
 f t r b k m k n f u w c h d f
 f b o n n e t a f n s o s i f
 o s s o n c b b l d g l d l h
 d b s n n e h o a a g a p o s
 i e a s t e r y u y b t a h l
 l s s l n o c n c h y e h m a
 a e n s p r i n g h b b u s m
 s t n b s l a u t e l e n g b
 r e i b s l h b a s k e t f f
 b c h i c k c r a m h s r n g

Mind Games Answers

1. Ramble and marble
2. 68.962962 miles
3. Portugal. The fifth letter of the first country, then the fourth letter of the next country, then the third of the next country and so on gives the presenter's name in reverse
4. One mile east
5. 43.636364
6. Beach Holidays Abroad – 48, Camping Holidays – 6 and Cruises – 35.

the windmill
 DEDDINGTON COMMUNITY CENTRE

Free wi-fi, ample parking, kitchen facilities

Newly furnished meeting space for up to 10 people, with brand new AV equipment

Business? or Pleasure?

Main hall with new sound & light system, dance & fitness studio, new adventure playground and sports facilities.

Contact the Windmill bookings secretary:
 t: 07720 834006
 e: enquiries@thewindmillededdington.org
 www.thewindmillededdington.org

BOX OFFICE
 01865 305305
 oxfordplayhouse.com

MYCC
 MUSICAL THEATRE
 COMPANY OF OXFORD

Wed 8 to Sat 11 April 2020

CHESS
 THE MUSICAL

BENNY ANDERSSON
 TIM RICE
 BJORN ULVAEUS

POSTPONED

The Cricket Report



Lifetime Averages...

Here are the Lifetime Bowling Averages, which include only those still playing for the club. Many thanks to Jon Scotchbrook for helping me to compile them - it is a labour of love!

	Players	Overs	Runs	Wickets	Lifetime Average	Economy R/O	5W/I
Jack	Higgins	9.2	33	4	8.25	3.6	
Paul	Nicholaides	11	47	5	9.40	4.3	
Tom	Chesser	89.8	305	24	12.71	3.4	1
Arthur	Higgins	23	120	8	15.00	5.2	
Peter	Higgins	476.7	1795	119	15.08	3.8	2
Hector	Higgins	5	32	2	16.00	6.4	
Jamie	Longman	107.6	385	24	16.04	3.6	
Paul	Longman	331.7	1390	86	16.16	4.2	2
Graham	Bullen	27.3	186	10	18.60	6.8	
Toby	Parker	19	75	4	18.75	3.9	
Greg	Renk	237.5	1096	58	18.90	4.6	
Rob	Wilson-Fry	235.4	706	37	19.08	3.0	
Chris	Watson	16	104	5	20.80	6.5	
Nigel	Doggett	69	361	16	22.56	5.2	
Mark	Parker	43.2	254	11	23.09	5.9	
Jonty	Renk	191	804	31	25.94	4.2	
Stan	Owen	113	625	21	29.76	5.5	
Ben	Parker	48	179	6	29.83	3.7	
Sam	Hatzigeorgiou	40.1	316	8	39.50	7.9	
Hugo	R-T	22	124	3	41.33	5.6	
Olly	Doggett	36	149	3	49.67	4.1	
Phil	Chesser	37	253	5	50.60	6.8	
Jon	Scotchbrook	20.3	162	3	54.00	8.0	
Jeremy	Farrar	6	56	1	56.00	9.3	
James	Liebrecht	29	178	2	89.00	6.1	
Jock	Shepherd	13	94	1	94.00	7.2	
Jeremy	Lowe	12	96	1	96.00	8.0	
Charlie	S-J	8	69	0		8.6	

First Nets...

Practice makes perfect – mmm, not sure we will ever approach perfection, but Nets will definitely make the team perform a tad better. Our first Nets of the season will be from 6pm at Robinson's Close on Wednesday 22nd April – all welcome.

Next month the 2020 Season's Fixtures.

Best wishes to all

Peter Higgins, Chairman



THE VALENTINE CLUB

First, on behalf of The Valentine Club, we would like to thank Heather for all her hard work as the outgoing editor of SAL and welcome Angela and Becca to the role of joint editors of this wonderful magazine.

Unfortunately, and after some serious consideration, the club decided to cancel the meeting for March due to the coronavirus outbreak. It is always difficult to make such a decision but the health and welfare of our members and helpers must take priority.

Our February meeting gave us the opportunity to enjoy some superb fish and chips, cooked on site by Mark Davidson and accompanied by a fantastic array of puddings made by members of the club. This was accompanied by a few games of bingo and a surprise act by some visiting folk from what could have been mistaken for West Country people. It was in fact a well disguised Alan and Noreen who were concerned about the ability to collect water in a receptacle, which resembled a bucket with a hole in the bottom. We also welcomed Rosie White from Age UK Oxfordshire who came along to see exactly how we passed our time and why The Valentine Club is the biggest and most progressive seniors' group around.

Our first trip of the year takes us to Aerospace Bristol where we will hopefully be able to view many forms of air travel and have the opportunity to board Concorde and have a glimpse of the cockpit. We will have to evaluate the situation regarding travel nearer the time so please, if you have booked on this trip, contact me about a week before we are due to visit Bristol to check if the trip is still on.

With any society, funding is always an issue and our club is no exception. We are very fortunate to have such a large number of members who by means of the annual subscription of £10 and their unending support of the monthly raffle and our famous jumble sale, manage to attract high quality speakers and entertainers and subsidise many of the coach trips. Nevertheless, we are forever grateful when an outside body gives us a helping hand with some additional funds. In February, The Oxfordshire Community Foundation (OCF) very kindly awarded us £750, which will go a very long way in helping us meet our annual budget. Thank you to the OCF for such generous support as it will make such a difference to the club.

Moving onto this month, we will have to see how things are progressing with the coronavirus epidemic and if all goes well we welcome back to the club Jackie Maynard who has the most amazing voice and was one of the finalists on X-Factor 2018. She has been many times before and has a voice that matches Shirley Bassey. Again, if anyone is unsure if the meeting will go ahead, please contact me about a week before the meeting to check.

If you want more information about the club, have a look on our very own website at www.valentineclub.wixsite.com/aston or give me a call.

Richard Preston

Group organiser

Richard.preston5@btopenworld.com or 01869 340512

Keep safe and please check to make sure any elderly or vulnerable neighbours are OK.



FREE
Collection and
Delivery

- MOTs**
- Servicing**
- Tyres**
- Clutches**
- Exhausts**
- Suspension**

We will only ever give you **HONEST ADVICE**
We will only carry out work with **YOUR APPROVAL**
We **GUARANTEE** our work (12 months parts and labour)

Special offer - book and get

OFF 10%

With voucher code **steeple1016**
Offer cannot be used in conjunction with any other offer
and is valid at our Hopcrofts Holt branch only

From Steeple Aston and surrounding villages

01869 347 770 - www.ptagarages.co.uk

Hopcrofts Holt, Steeple Aston, Bicester, Oxfordshire, OX25 5QQ



Ashcroft THERAPY CENTRE

Hudson Street, Deddington OX15 0SW
www.ashcrofttherapycentre.co.uk

The range of treatments on offer from practitioners at Ashcroft Therapy Centre now includes:

- ☉ Chiropractor
- ☉ Physiotherapy & Acupuncture
- ☉ Sports & Remedial Massage Therapy
- ☉ Podiatry
- ☉ Chiropody
- ☉ Child & Adolescence Psychotherapy
- ☉ Cognitive Behavioural Therapy - CBT
- ☉ Clinical Psychologist
- ☉ Counselling
- ☉ Hypnotherapy
- ☉ Hearing Aid Practitioner & Ear Care Specialist

Visit www.ashcrofttherapycentre.co.uk
for booking information



Fully Serviced Therapy & Treatment Rooms for Hire

7 beautifully decorated, stylish & relaxing treatment rooms all set in a warm professional atmosphere at an affordable price.

Visit our website for more details
www.ashcrofttherapycentre.co.uk

Contact Robert on 01869 254 007 or
email enquiries@ashcrofttherapycentre.co.uk

C&S Chimney Services

h
i
m
n
e
y
s

- New Chimneys, Rebuilds and Repairs
- Stove Installations
- Chimney Lining
- Internal and External Twin Wall Chimney Systems
- Stove Service and Repair
- Lead Flashing
- Bird guards & Cows



Steve 07947701953
Office 01295811083

Email

cschimneys@yahoo.co.uk



cschimneysoxfordshire.co.uk



Humphris funerals

Family Funeral Directors since 1880

*Our family serving
your family*

Independent family funeral directors
and monumental masons since 1880

Complete traditional, contemporary
and preplanned funeral service

www.humphrisfunerals.co.uk

01295 265424

32 Albert Street, Banbury,
Oxfordshire OX16 5DG



Steeple Aston Online

News, information, pictures, local directory, weather forecast,
noticeboard and much more...

Your village. Your website. Visit today!



www.steepleaston.org.uk

facebook.com/steepleastonvillage



STAPLES

BUILDING

EST 1984

Staples Building creates beautiful living
spaces of outstanding quality.

For an estimate please contact **Tim Staples**

☎ 01869 345 592

✉ enquiries@staplesbuilding.co.uk

🌐 www.staplesbuilding.co.uk

🏠 EXTENSIONS

🏠 CONVERSIONS

🏠 RENOVATIONS

🏠 NEW BUILD

Church Worship

**During the current COVID-19 period
public services of worship are
suspended.**

**Our church buildings remain open every
day for:**

**Private prayer
Reflection
Time with God
Faith, Hope and Love**

**‘God is our refuge and strength,
A very present help in times of trouble’**

**Please remember:
We have Worship at Home video
resources on our website
www.sntchurch.com**

**These are updated every Sunday.
Why not join with us and take time
to pray, reflect and
worship at home with us?**

Local Info

Steeple Aston Village Hall

	Hiring Fee	Caution
Hall (meeting night)		
Represented Clubs.....	£9	
Non-Represented Clubs.....	£17	
Hall Only (social occasion)		
Represented Clubs.....	£32	
Others.....	£53	
All Facilities (social occasion)		
Village Residents	£65	£200
Represented Clubs.....	£65	£200
Others - up to 6 hours.....	£110	£300
Others - over 6 hours.....	£160	£300
All Facilities (off peak - 4 hours)		
Village Residents	£30	£75
Represented Clubs.....	£30	£75
Committee Room		
Represented Clubs.....	£6	
Non-Represented Clubs.....	£12	
Discount for represented clubs – 15% for six block bookings		

Letting Agent : Katie Rushworth (340196)
 Chairman: Barbara Brewer (340423)
 Secretary: Margaret Bullement (347346)

A represented club must send a representative to the Village Hall Committee meetings.

Rubbish bin collection day = Thursday

April	May
2 nd green	7 th blue and brown
9 th blue and brown	14 th green
16 th green	21 st blue and brown
23 rd blue and brown	28 th green
30 th green	

Steeple Aston Sports and Recreation Centre Letting Charges

Social Function peak times (up to 6 hours) £55

Social Function off-peak (up to 5 hours) £27.50

Meeting of represented club: £11 per session

Caution Money for Private Lettings: £100

Letting agent: Katie Rushworth - Tel: 340196

mailto: rec.trust@googlemail.com

Chairman - Torquil McLusky - Tel: 347914

Treasurer - Chris Cooper - Tel: 347173

Bus times

This timetable is a guide only - please consult local listings for up-to-date information and weekend times.

REVISED S4 BUS SERVICE (Mon - Fri)

Buses from Steeple Aston (outside post office) to Oxford

06.29 07.44 09.03 10.33 12.03 13.33 15.03 16.33 18.03 19.22

Arrives Oxford

07.07 08.42 09.44 11.14 12.44 14.14 15.44 17.14 18.44 20.04

Buses from Steeple Aston (outside post office) to Banbury

07.57 09.17 10.02 10.37 12.07 13.37 15.07 16.37 18.07 19.37 21.00

Arrives Banbury

08.40 09.53 10.40 11.13 12.43 14.13 15.43 17.13 18.43 20.05 21.29

MIDDLE BARTON BUS (Mon - Fri)

Bus from Steeple Aston (Nizewell Head) to Heyford Station 07.35 18.08

Arrives Heyford station 07.39 18.13

Bus from Heyford Station to Steeple Aston (Nizewell Head) 18.15

Arrives Steeple Aston (Nizewell Head) 18.16

5 BUS SERVICE (Wednesdays)

Bus from Steeple Aston to Chipping Norton 09.00

Arrives Chipping Norton 09.40

Bus from Chipping Norton to Steeple Aston 11.50

Arrives Steeple Aston 12.26

8 BUS SERVICE (Fridays)

Bus from Steeple Aston (outside Post Office) to Bicester 10.41

Arrives Bicester Village railway station 11.06

Bicester Tesco 11.12

Bicester Avenue 11.16

Bus from Bicester to Steeple Aston (outside Post Office)

Bicester Village railway station 13.37

Bicester Tesco 13.43

Bicester Avenue 13.48

Arrives Steeple Aston (outside Post Office) 14.05

Our Bus Barters is suspended because of Coronavirus

Steeple Aston Calendar

All events are subject to possible last-minute changes and cancellations due to Coronavirus. Do check village notices, www.steepleaston.org.uk or contact the organisers for up-to-date information before you set out.

APRIL			
Tuesday 14th	WI: Annual meeting and Robert Dudley	Village Hall	7.30pm
Wednesday 15th	SAL May issue copy and advert deadline		
Monday 20th	Parish Council meeting	To be decided	7.30pm
Tuesday 21st	Valentine Club: Jackie Maynard Sings	Village Hall	2.30pm
Saturday 25th	Deddington Farmers' Market	Deddington	9am
MAY			
Sunday 3rd	SAVA Guided Village Walk	Steeple Aston	2pm
Saturday 9th	Songs from the 40s	Village Hall	6pm
Friday 15th	SAL June issue copy and advert deadline		
Monday 18th	Parish Council Meeting	To be decided	7.30pm
Tuesday 19th	Valentine Club: Magnetic Therapy	Village Hall	2.30pm
Saturday 23rd	Deddington Farmers' Market	Deddington	9am

Choral Society Rehearsals. Village Hall - 7.45pm - Mondays

Badminton. Village Hall - 10am -12.30pm - Tuesdays

Bell Ringing practice. Church Tower - 7.30pm - Tuesdays

Scouts. Sport & Rec Centre - 7.30pm - Tuesdays

Baby and Toddler Group. Sport & Rec Centre - 9am -11am - Thursdays

Cricket Nets. Robinson's Close - 6pm - Thursdays

Badminton. Village Hall - 8pm - Thursdays

Village History Centre (SAVA) open 10am-12pm - Saturdays

Steeple Aston Life is published by Steeple Aston Life Committee

Printed by: **Joshua Horgan Print & Design**

Unit 2 Glenmore Business Centre, Range Road, Witney, OX29 0AA Tel: 01865 246762

[e-mail: print@joshuahorgan.co.uk](mailto:print@joshuahorgan.co.uk)

*The views expressed are not necessarily the views of the Editor or the Committee.
Although the Editor has a high regard for all the Advertisers, readers are recommended to seek appropriate financial or legal advice before entering into any binding agreement.*

NICHOLSONS



A HIDDEN GEM IN THE COUNTRYSIDE

Here at Nicholson's we aim to offer you much more than your typical garden centre experience.

The Plant Centre

Hedging & Screening | Colourful herbaceous plants and flowers
Fragrant herbs | Ornamental and edible fruit trees | David Austin roses
Topiary | Veggie strips | Hairy pots | Expert advice & Guidance

Rosara - Outdoor style for your garden

Furniture Sets | Garden accessories | Hammocks | Planters | Textiles
Kadals and BBQs | Lighting

The Yurt Café - Delightful treats under canvas

Breakfast | Light lunches | Oak roasted coffee | Afternoon Tea
Artisan teas | Homemade cakes | All dietary requirements welcome

Yurt Closed

To find out more please visit our website:

www.nicholsonsgb.com

The Park, North Aston, OX25 6HL
01869 340342



We have the pleasure of inviting you for a free valuation of your property

We are pleased to tell you that the local property market has shown positive signs of change in recent weeks. We have had an extremely high demand from buyers looking for properties in your area, so your property may be worth more than you think. We have a team of independent property experts in your area. They have more than 91 years of combined experience in the local market and are more than happy to complete a free valuation of your property with no obligation.

So, if you are curious about the value of your home or want to take advantage of the current market, please contact:

Fine & Country North Oxfordshire
30 Market Square, Bicester, OX26 6AG

(01869) 240075 e. north.oxfordshire@fineandcountry.com

CONCERNED ABOUT INHERITANCE TAX?

Are you concerned about the taxman taking your family's inheritance?

Do you want a better understanding of what your Inheritance Tax liability might be?

Would you like to take steps to reduce/mitigate your potential Inheritance Tax liability?

Do you want to have a greater say in who receives your wealth and when?

Could you leave more wealth to your children/grandchildren rather than to the Government?

If the answer to any of the above is "yes", please contact us to arrange a free initial consultation.



The Oxford Advisory Partnership Ltd

Independent Financial Advisers

Tel: 01865 848770

e-mail: enquiries@oxfordadvisory.com

Levels and bases of and reliefs from taxation are subject to change and their value depends on the individual circumstances of the investor

INHERITANCE TAX AND RETIREMENT PLANNING SPECIALISTS

Hart
Vets



*'Improving the lives
of pets and their
owners'*

- Friendly, caring, local independent vets
- Experts in treating dogs, cats and family pets
- Open 7 days a week
- Modern premises with excellent facilities
- Dedicated night nurses
- 24/7 emergency care provided by our own vets



Bicester 01869 323223
Waddesdon 01296 651000



www.hartvets.co.uk

RCVS
ACCREDITED
PRACTICE
SMALL ANIMAL HOSPITAL